



19 Greenside, Cottam, Preston, PR4 0WA
£250,000

GROUND FLOOR

Kitchen/diner 13'0" x 22'4" (3.97m x 6.82m)

High quality wood effect laminate flooring with patio doors leading to the rear garden and curtains. A range of fitted kitchen units, worktops and integrated oven, hob, hood, fridge-freezer and dishwasher

Utility 6'8" x 5'2" (2.04m x 1.58m)

High quality wood effect laminate flooring with plumbing for washing machine and sink

WC/cloaks

High quality wood effect laminate flooring with 2 piece bathroom suite in white, radiator and blind

Lounge 13'3" x 18'10" (4.04m x 5.75m)

Carpet flooring with patio doors leading to balconies to the front aspect, gas fire and curtains

Bedroom 11'1" x 18'10" (3.40m x 5.76m)

Carpet flooring with window to the rear elevation, curtains and blind

Bathroom

Carpet flooring with 3 piece bathroom suite in white, separate showering enclosure, partially tiled decor and radiator

SECOND FLOOR

Bedroom 18'10" x 11'2" (5.75m x 3.42m)

Carpet flooring with window to the rear elevation, fitted wardrobes and curtains

En-suite

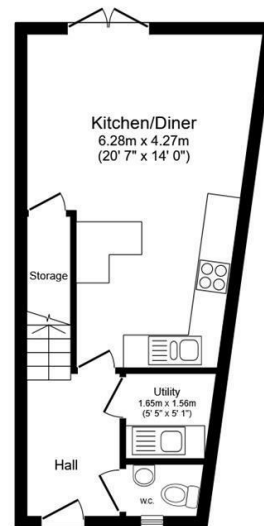
High quality vinyl flooring with 2 piece bathroom suite in white, separate showering enclosure, partially tiled decor and radiator

Bedroom 16'11" x 11'4" (5.16m x 3.46m)

Carpet flooring with window to the front elevation, curtains, blind and fitted wardrobes

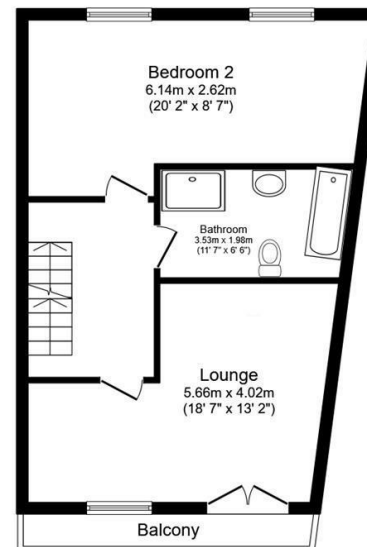
EXTERNAL

Well presented and private rear garden, enclosed by panel fencing. Parking for 2/3 vehicles, leading to a detached single garage with power & lighting.



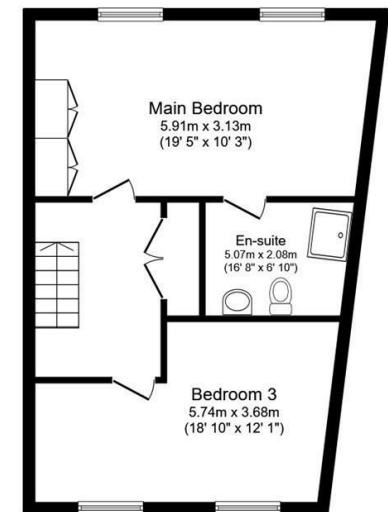
Ground Floor

Floor area 32.6 sq.m. (350 sq.ft.)



First Floor

Floor area 50.2 sq.m. (541 sq.ft.)



Second Floor

Floor area 50.1 sq.m. (539 sq.ft.)

Total floor area: 132.9 sq.m. (1,430 sq.ft.)

This floor plan is for illustrative purposes only. It is not drawn to scale. Any measurements, floor areas (including any total floor area), openings and orientations are approximate. No details are guaranteed, they cannot be relied upon for any purpose and do not form any part of any agreement. No liability is taken for any error, omission or misstatement. A party must rely upon its own inspection(s). Powered by www.PropertyBox.io